



# PARENTS' BRIEFING

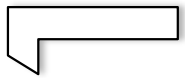
16 January 2023

# PRIMARY 2



# PROGRAMME

---



## SEGMENT

- Introduction
- School's Focus and Direction**
- Safety & Security Matters
- Holistic Development
- Learning Dispositions
- Calendar of Events



# PROGRAMME

---

## SEGMENT 1

- Introduction
- School's Focus and Direction**
- Safety & Security Matters
- Holistic Development
- Learning Dispositions
- Calendar of Events



# SCHOOL VALUES

---

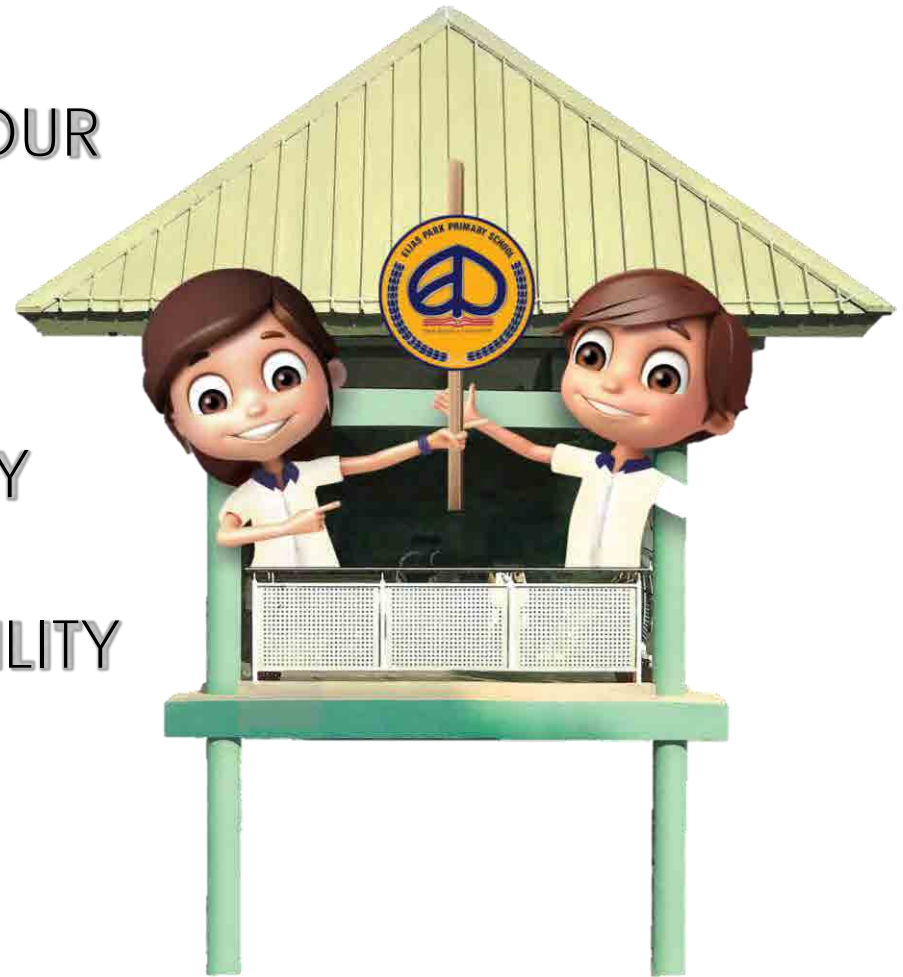
E NDEAVOUR

L OVE

I NTEGRITY

A DAPTABILITY

S ERVICE



# SCHOOL VALUES

---

## E NDEAVOUR

We aspire to realise our goals, constantly striving for continuous improvement and excellence in all that we do.



## L OVE

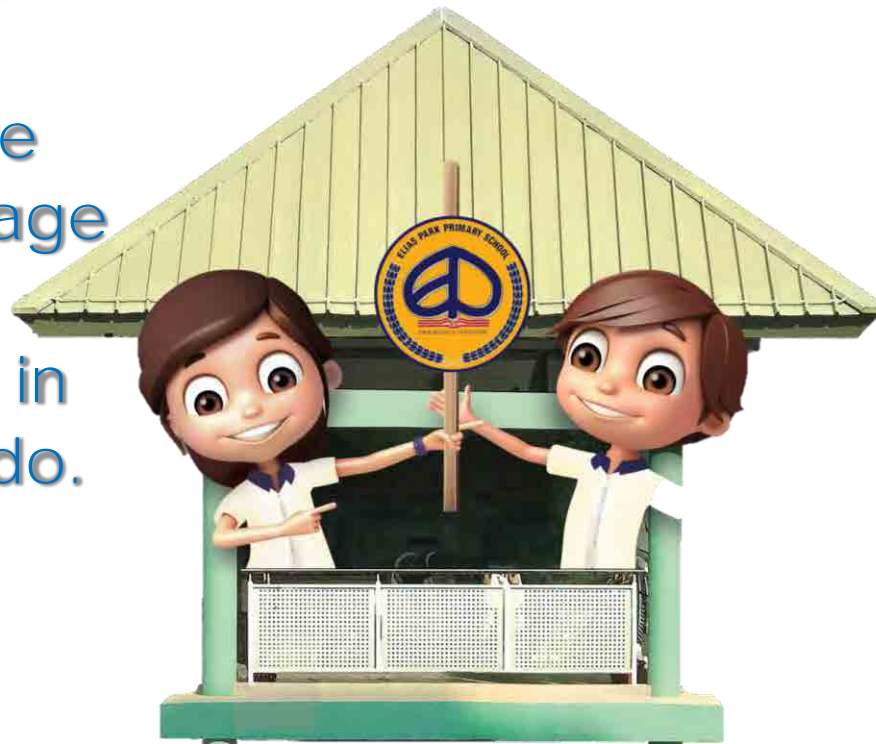
We respect others, live with passion and seek to bring out the best in ourselves and others in our community and Singapore.

# SCHOOL VALUES

---

## I NTEGRITY

We walk the talk and demonstrate moral courage and uprightness in all that we do.



## A DAPTABILITY

We constantly seek new ideas, adapt to changes and are ready to take on challenges.



# SCHOOL VALUES

---

## SERVICE

We offer our best to enrich the lives of others and our well-being.



# FUTURE-READY CITIZENS





# FUTURE-READY CITIZENS

Emphasis on  
21CC Skills:

Self-Directed Learning (SDL) &  
Collaborative Learning (CoL)

- 3 'I's**
- active **I**magination
  - collective **I**nquisitiveness
  - rich **I**nterconnectedness



# FUTURE-READY CITIZENS

**1 ICT Programmes**  
comfortable & controlled use of ICT  
mindful of cyber etiquette

**2 Values Education**  
do the right thing

**3 Holistic Education**  
balanced life



# FUTURE-READY CITIZENS

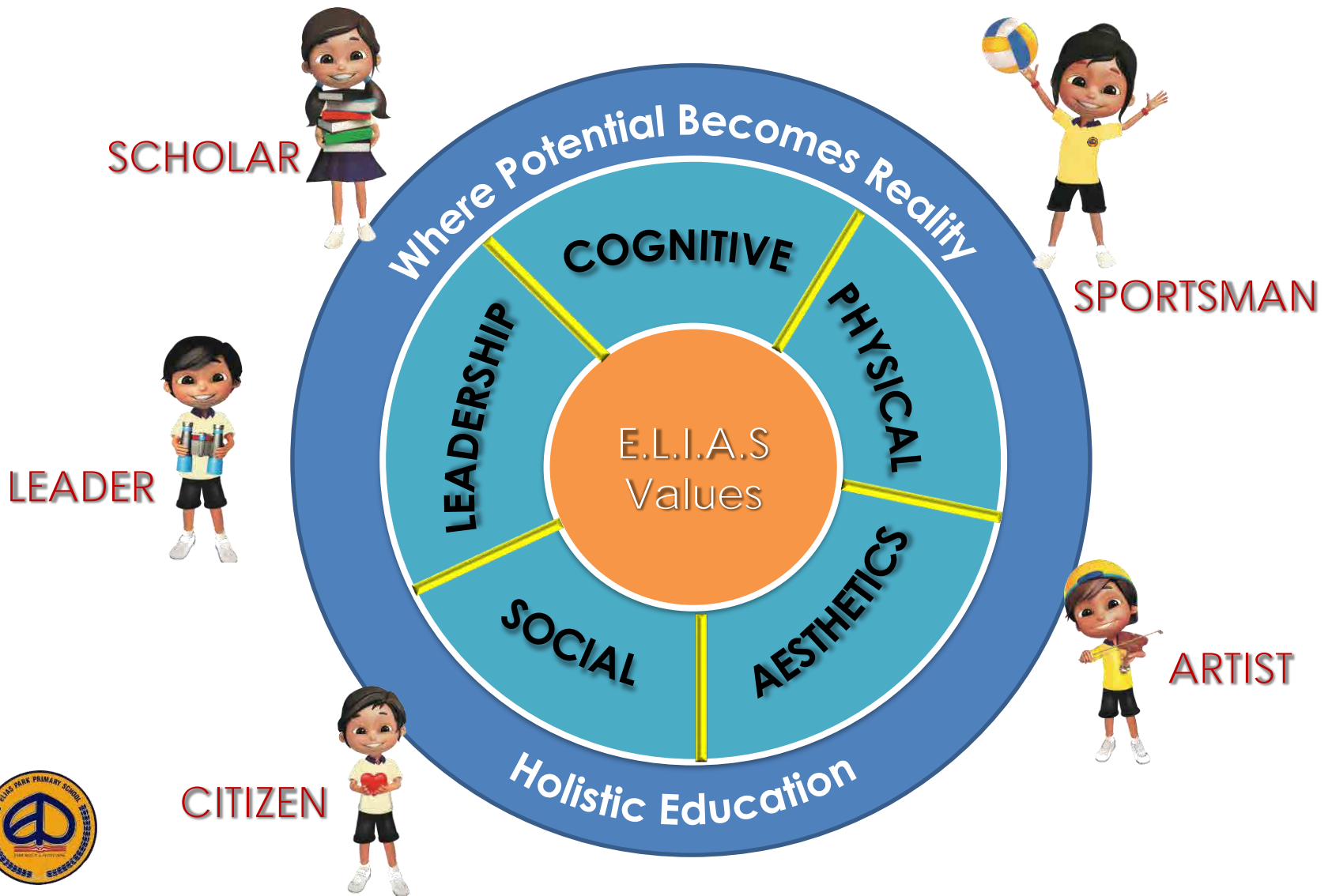
Entering a VUCA world that is...

Volatile  
Uncertain  
Complex and  
Ambiguous

ADAPTABLE  
RESILIENT



# FUTURE-READY CITIZENS



# FUTURE-READY CITIZENS



ELIASIAN  
SCHOLAR

A self-directed,  
life-long learner

- takes responsibility for his own learning
- has a lively curiosity about things



# FUTURE-READY CITIZENS

ELIAS PARK PRIMARY SCHOOL-MISSION, VALUES



## ELIASIAN SPORTSMAN

A healthy and active learner

- leads a healthy and well-balanced lifestyle
- is humble in victory and gracious in defeat



# FUTURE-READY CITIZENS

- appreciates various art forms
- Is able to express self in the visual / performing arts

## ELIASIAN ARTIST

A passionate and creative learner



# FUTURE-READY CITIZENS

ELIAS PARK PRIMARY SCHOOL-MISSION, VISION AND VALUES



## ELIASIAN LEADER

A confident and visionary learner

- has the moral courage to stand up for what is right
- Exercises initiative and takes calculated risks





# FUTURE-READY CITIZENS



## ELIASIAN CITIZEN

A responsible  
and respectful  
learner

- has self and social awareness
- informed about world affairs



# PROGRAMME

---

## SEGMENT 1

- Introduction
- School's Focus and Direction
- Safety & Security Matters
- Holistic Development
- Learning Dispositions
- Calendar of Events



# Safe Management Measures

## a) Social responsibilities

- Frequent hand washing, bring a working token to school, wearing of mask, not going to school when unwell. These are our key measures to keep our children, families and community safe and resilient against COVID-19.

## b) Staggered lunch for Eliasians

- Resumption of face-to-face after school activities in EPPS (e.g. CCA, remedials, support and enrichment programmes).
- To keep everyone safe in EPPS lunch time will be staggered for all Eliasians and our *afterschool* students.



# SAFETY/SECURITY REMINDERS

---

## Entry into School

1. Obtain Visitor Pass from Security Post
2. Proceed to General Office for assistance
3. No visitors are allowed at Classroom Blocks



# Keeping Our School Safe

- Alternative drop off points
- Students enter the school through Gate 3 (back gate)



# SAFETY/SECURITY

---

## REMINDERS

### Traffic / Pedestrian Safety

1. Remind children to follow pedestrian rules
2. Observe kerb drill and be alert at all times



# SAFETY/SECURITY REMINDERS

## Driving Reminders

1. Drive at 15km/h or slower
2. School bag should be with student
3. Alight from passenger door on the left



# SAFETY/SECURITY REMINDERS

## Driving Reminders

1. Please do not overtake cars in front
2. Refrain from alighting from right side of vehicle and walking in front of other cars





# SAFETY/SECURITY REMINDERS

## Driving Reminders

3. Refrain from alighting from outer lane



# PROGRAMME

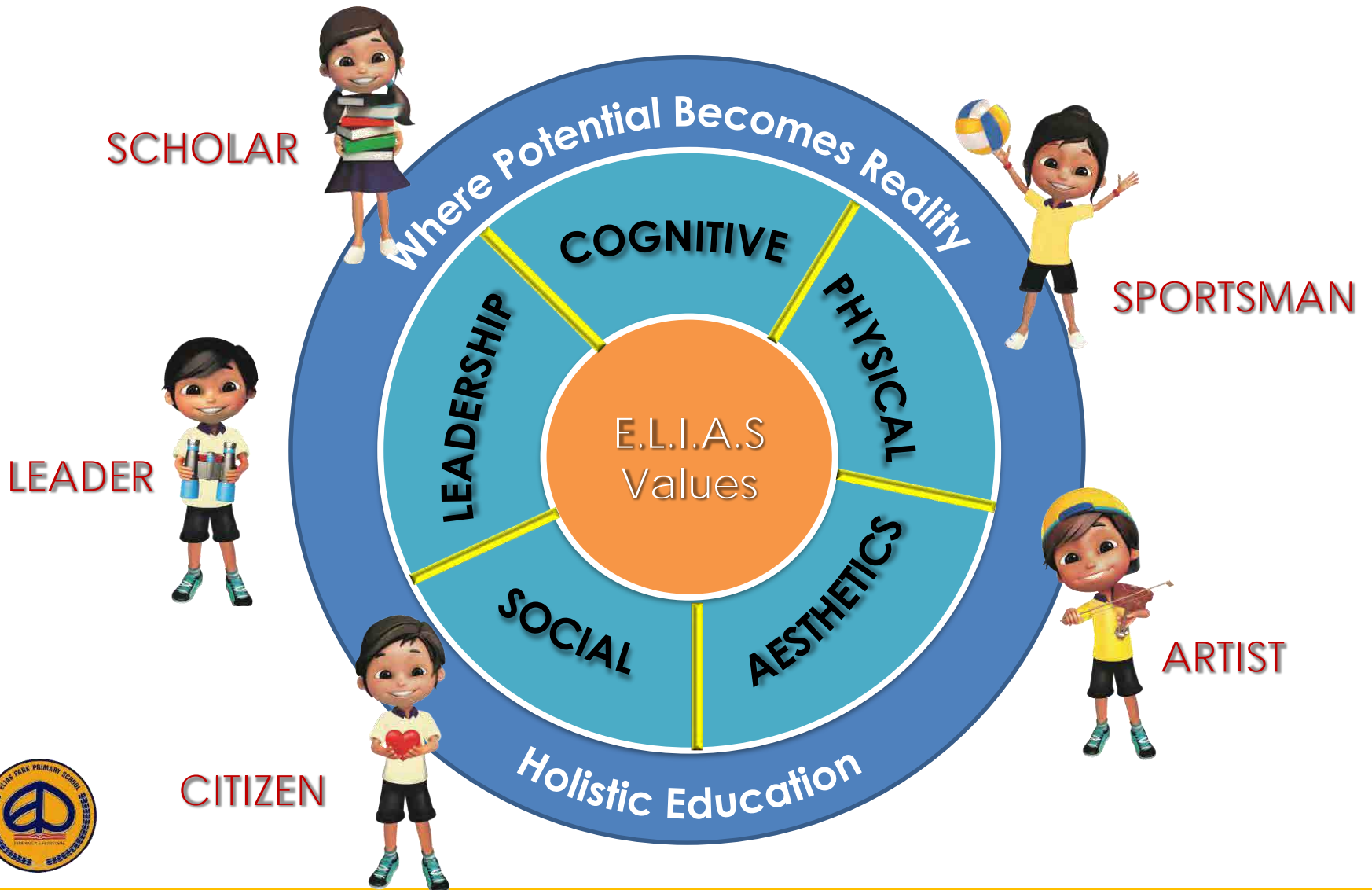
---

SEGMENT 1

- Introduction
- School's Focus and Direction
- Safety & Security Matters
- Holistic Development
- Learning Dispositions
- Calendar of Events



# FUTURE-READY CITIZENS



# DOMAIN PROGRAMMES

## SCHOLAR



Learning Support Programme for English and Mathematics

Parent-Child MTL Reading Programme

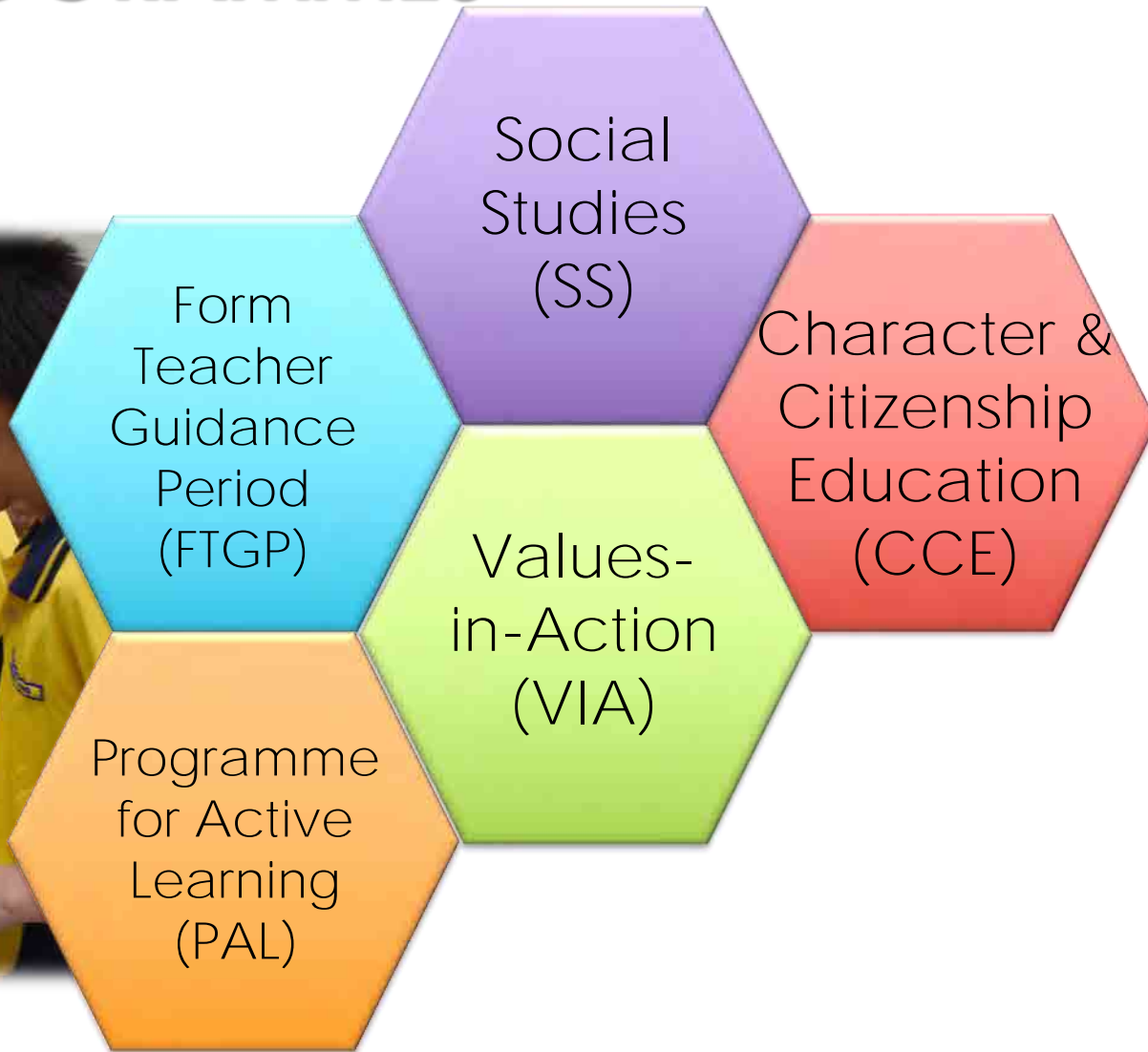
Mother Tongue Language Fortnight

Learning Journeys



# DOMAIN PROGRAMMES

## CITIZEN



# DOMAIN PROGRAMMES

## CITIZEN



## Character & Citizenship (CCE) Lessons



# DOMAIN PROGRAMMES

## CITIZEN

ACTIVE  
DIALOGUE

CONTINUOUS  
FEEDBACK

**Family Time**

in CCE Lessons!



BONDING  
TIME



# DOMAIN PROGRAMMES

## CITIZEN



## P2 VIA PROGRAMMES

- Everyday Responsibilities
- Donation Drive
- Recycling Project
- P2 Caring Eliasians @ Home

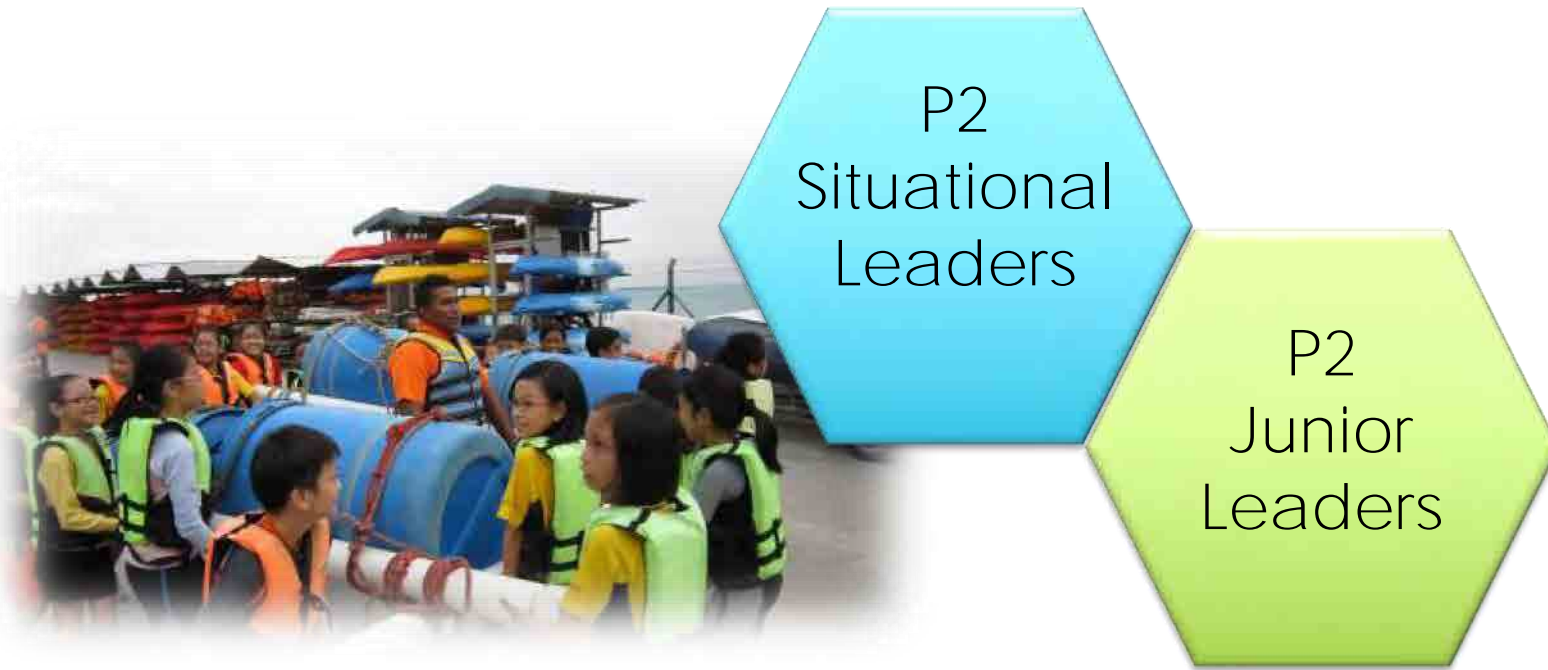
To provide authentic platform that enhances students' development as socially responsible citizens through learning and application of Values, Knowledge and Skills.





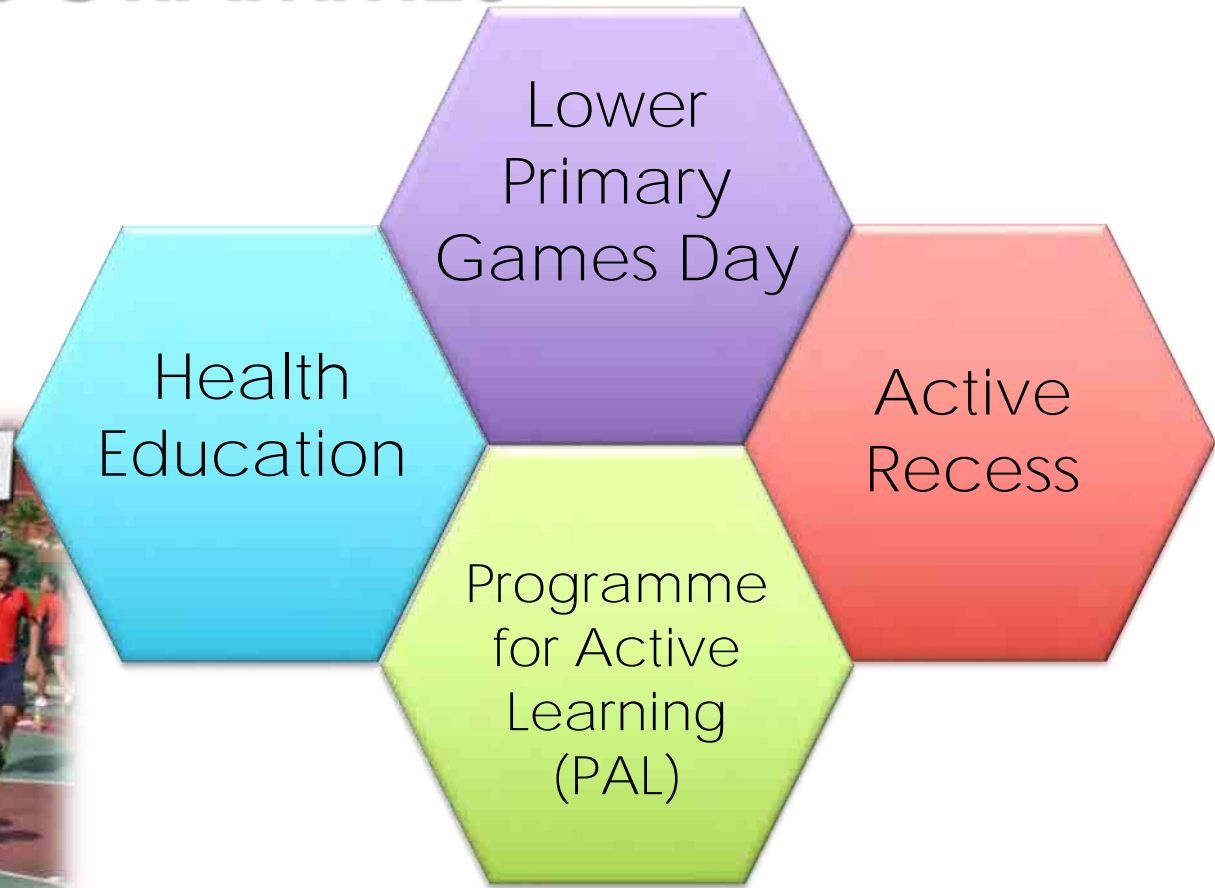
# DOMAIN PROGRAMMES

## LEADER



# DOMAIN PROGRAMMES

## SPORTSMAN



# DOMAIN PROGRAMMES

## ARTIST

Art Museum  
Based  
Learning

ELIAS  
Got  
Talent  
Showcase

Aesthetics  
Week

Ceramics  
Module



# PROGRAMME

---

SEGMENT 1

- Introduction
- School's Focus and Direction
- Safety & Security Matters
- Holistic Development
- Learning Dispositions
- Calendar of Events



# GRADUAL CHANGES

**From  
2019**

**From  
2020 or 2021**

## School-based Assessment Structures

### **P1 & P2**

- > Removal of all weighted assessments (including P2 year-end exam)

### **S1**

- > Removal of Mid-Year Exam (MYE)

### **From P3 to S4/5**

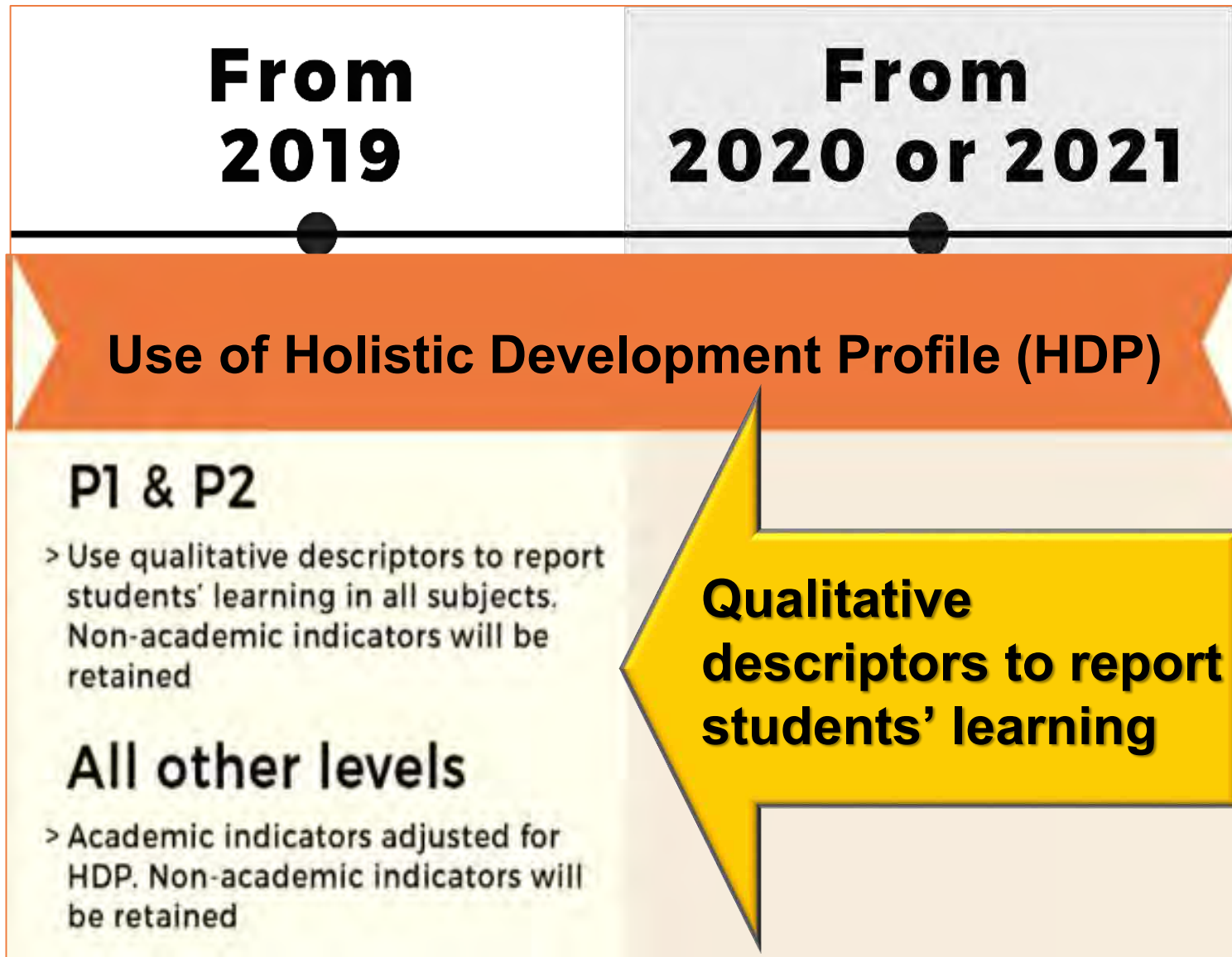
- > Schools to conduct no more than one weighted assessment per subject, per school term. This is in addition to Mid-Year Exam (MYE) and year-end exam at levels where this is applicable

### **P3, P5, S3**

- > Removal of Mid-Year Exam (MYE)



# Holistic Development Profile for P2



# Holistic Development Profile for P2

## Four Levels of Qualitative Descriptors

**Accomplished**

**Competent**

**Developing**

**Beginning**

**Example: Learning Outcomes for English Language  
Speak and express their thoughts and feelings  
clearly**



# Holistic Development Profile for P2

## Learning Outcomes for the subject

## Qualitative Descriptors

**SUBJECT**

**MATHEMATICS**

• Understand numbers up to thousand.	Accomplished
• Solve mathematical problems involving addition and subtraction.	Competent
• Compare and order objects by length, mass or volume.	Competent
• Understand Fractions.	Developing





# How will we allocate classes for Primary 3?

When progressing to P3, students will no longer be assigned classes based solely on academic ability.



2018

From 2019

From 2020

Revising criteria for the Edusave Merit Bursary (EMB) for P1 and P2 and Edusave Good Progress Award (GPA) for P2 and P3

### EMB for P1 & P2

- > Singapore Citizen
- > Top 25% of school's level and course in terms of academic performance.
- > Good conduct
- > Monthly household income does not exceed \$6,900 (or per capita income does not exceed \$1,725)

### GPA for P2 & P3

- > Singapore Citizen
- > Top 10% of school's level and course in terms of improvement in academic performance
- > Good conduct

### EMB for P1 & P2

- > Singapore Citizen
- > EMB will be adjusted to award students who consistently demonstrate good learning dispositions
- > Good conduct will continue to be a criterion
- > Monthly household income does not exceed \$6,900 (or per capita income does not exceed \$1,725)

### GPA for P2

- > Singapore Citizen
- > GPA will be awarded to students who do not qualify for EMB, but have shown improvement in learning dispositions within the year
- > Good conduct will continue to be a criterion

### GPA for P3

- > Singapore Citizen
- > GPA will be awarded to students who do not qualify for EMB, but have shown improvement in learning dispositions within the year
- > Good conduct will continue to be a criterion





## How will my child be selected for Edusave Academic Awards?

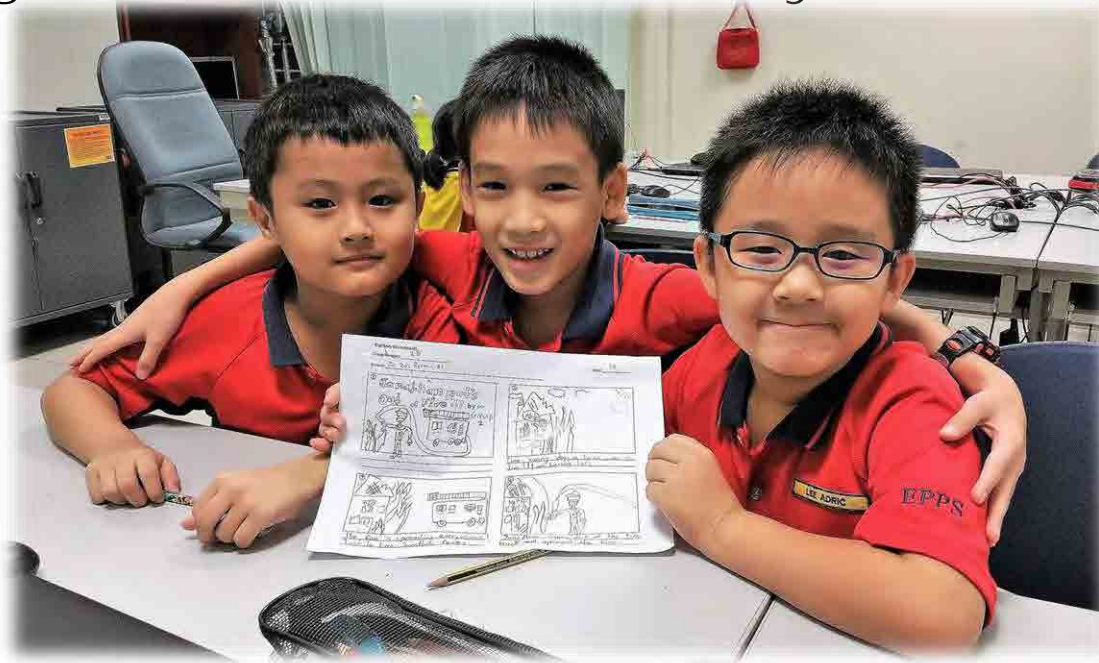


- Considers positive learning dispositions (e.g. diligence, curiosity, collaboration and enthusiasm & ELIAS values) instead of academic performance.
- **Edusave Merit Bursary:** P1 and P2 students who display positive learning dispositions consistently.
- **Good Progress Award:** P2 and P3 students who have made significant improvement in learning dispositions.

# Learn for Life

Changes aimed at helping our students:


- Have more time and space to deepen their learning, especially in the transition years (lower primary, P3, P5).
- Better enjoy the process of learning and develop dispositions for lifelong learning.
- Preparing our children to excel beyond academic results



# Encourage Joy of Learning!

## Encourage Joy of Learning by


- not over-emphasising academic performance
- **focus on your child's learning journey**, rather than comparing with others



I want to go for soccer tryouts.

6/10...


**Don't focus only on results**  
Encourage them to pursue their strengths, interests and try new things.



Let's do this!

Goals  
90/100, A\*  
Get into xx school

**Set goals together**  
Talk about their strengths, abilities and goals and how they can achieve them.



Why can't you be like your brother?

He's top in the class!

**Don't compare**  
celebrate their successes instead of comparing with others.



# Give our children the time and space to deepen learning

**I'M NOT WASTING TIME...**




**...I'M PLANNING MY FIRST NOVEL!**

Learning happens in different ways.

Ministry of Education  
Singapore

**I'M NOT DISTRACTED...**




**...I'M LEARNING HOW PLANES FLY!**

Learning happens in different ways.

Ministry of Education  
Singapore

**I'M NOT IDLE...**



**...I'M DESIGNING A FUTURE CITY!**

Learning happens in different ways.

Ministry of Education  
Singapore

# HOME INVOLVEMENT



---

We welcome all parents to share their time and expertise with the students in our school as a Parent Volunteer.

Sign up now!



# PROGRAMME

---

## SEGMENT 1

- Introduction
- School's Focus and Direction
- Safety & Security Matters
- Holistic Development
- Learning Dispositions
- Calendar of Events





# EPPS PROUD MOMENTS @ HOME – Children’s Day 2023



# 2023 PSLE EXAMINATION CALENDAR

Only P6 students report to school on the following dates:

Oral Examination	Tuesday, 15 Aug Wednesday, 16 Aug
Listening Comprehension	Friday, 15 Sep

Students do not report to school on the following dates:

Marking Exercise	Monday, 16 Oct to Wednesday, 18 Oct
------------------	--



Thank  
You

