



PARENTS' BRIEFING

11 February 2022

PRIMARY 2



PROGRAMME



SEGMENT

- Introduction
- School's Focus and Direction
- Safety & Security Matters
- Holistic Development
- Learning Dispositions
- Calendar of Events



PROGRAMME

SEGMENT 2

- Modes of Communication
- Curriculum Content
- Elias Peaks (Student Recognition Platform)
- Expectations of Students
- Home Involvement and Cyber Wellness

**Form Teachers
Meeting Room
ZOOM**



PROGRAMME

SEGMENT 1

- Introduction
- School's Focus and Direction
- Safety & Security Matters
- Holistic Development
- Learning Dispositions
- Calendar of Events



PROGRAMME

SEGMENT



Introduction



School's Focus and Direction



Safety & Security Matters



Holistic Development



Learning Dispositions



Calendar of Events



SCHOOL VALUES

E NDEAVOUR

L OVE

I NTEGRITY

A DAPTABILITY

S ERVICE



SCHOOL VALUES

E NDEAVOUR

We aspire to realise our goals, constantly striving for continuous improvement and excellence in all that we do.



L OVE

We respect others, live with passion and seek to bring out the best in ourselves and others in our community and Singapore.

SCHOOL VALUES

I NTEGRITY

We walk the talk and demonstrate moral courage and uprightness in all that we do.



A DAPTABILITY

We constantly seek new ideas, adapt to changes and are ready to take on challenges.



SCHOOL VALUES

SERVICE

We offer our best to enrich the lives of others and our well-being.



FUTURE-READY CITIZENS

Emphasis on
21CC Skills:

Self-Directed Learning (SDL) &
Collaborative Learning (CoL)

- 3 'I's
- active **I**magination
 - collective **I**nquisitiveness
 - rich **I**nterconnectedness



FUTURE-READY CITIZENS



FUTURE-READY CITIZENS

1 ICT Programmes
comfortable & controlled use of ICT
mindful of cyber etiquette

2 Values Education
do the right thing

3 Holistic Education
balanced life



FUTURE-READY CITIZENS

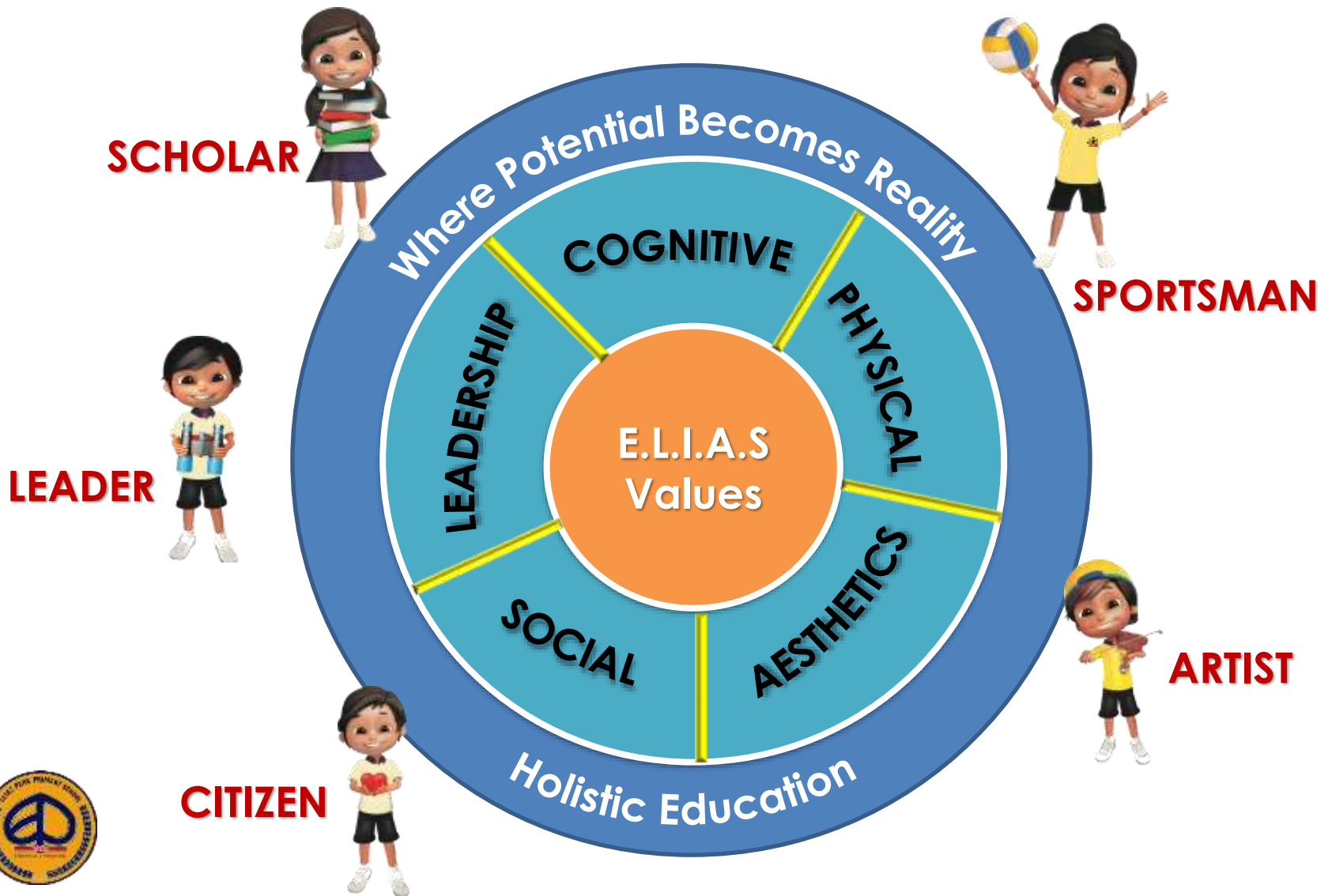
Entering a VUCA world that is...

Volatile
Uncertain
Complex and
Ambiguous

**ADAPTABLE
RESILIENT**



FUTURE-READY CITIZENS



FUTURE-READY CITIZENS



ELIASIAN SCHOLAR

A self-directed,
life-long learner

- takes responsibility for his own learning
- has a lively curiosity about things



FUTURE-READY CITIZENS



ELIASIAN CITIZEN

A responsible
and respectful
learner

- has self and social awareness
- informed about world affairs



FUTURE-READY CITIZENS

ELIAS PARK PRIMARY SCHOOL-MISSION, VISION & VALUES



ELIASIAN LEADER

A confident and visionary learner

- has the moral courage to stand up for what is right
- Exercises initiative and takes calculated risks



FUTURE-READY CITIZENS

- appreciates various art forms
- Is able to express self in the visual / performing arts

**ELIASIAN
ARTIST**

**A passionate
and creative
learner**



FUTURE-READY CITIZENS

ELIAS PARK PRIMARY SCHOOL-MISSION, VALUES



ELIASIAN SPORTSMAN

A healthy and active learner

- leads a healthy and well-balanced lifestyle
- is humble in victory and gracious in defeat



PROGRAMME

SEGMENT 1

- Introduction
- School's Focus and Direction
- Safety & Security Matters
- Holistic Development
- Learning Dispositions
- Calendar of Events



Safe Management Measures

a) Social responsibilities

- Frequent hand washing, bring a working token to school, wearing of mask, not going to school when unwell. These are our key measures to keep our children, families and community safe and resilient against COVID-19.

b) Staggered lunch for Eliasians

- Resumption of face-to-face after school activities in EPPS (e.g. CCA, remedials, support and enrichment programmes).
- To keep everyone safe in EPPS lunch time will be staggered for all Eliasians and our *afterschool* students.



SAFETY/SECURITY REMINDERS

Entry into School

- 1. Obtain Visitor Pass from Security Post**
- 2. Proceed to General Office for assistance**
- 3. No visitors are allowed at Classroom Blocks**



Keeping Our School Safe

- Alternative drop off points
- Students enter the school through Gate 3 (back gate)



SAFETY/SECURITY

REMINDERS

Traffic / Pedestrian Safety

- 1. Remind children to follow pedestrian rules**
- 2. Observe kerb drill and be alert at all times**



SAFETY/SECURITY REMINDERS

Driving Reminders

1. Drive at 15km/h or slower
2. School bag should be with student
3. Alight from passenger door on the left



SAFETY/SECURITY REMINDERS

Driving Reminders

1. Please do not overtake cars in front
2. Refrain from alighting from right side of vehicle and walking in front of other cars



SAFETY/SECURITY REMINDERS

Driving Reminders

3. Refrain from alighting from outer lane



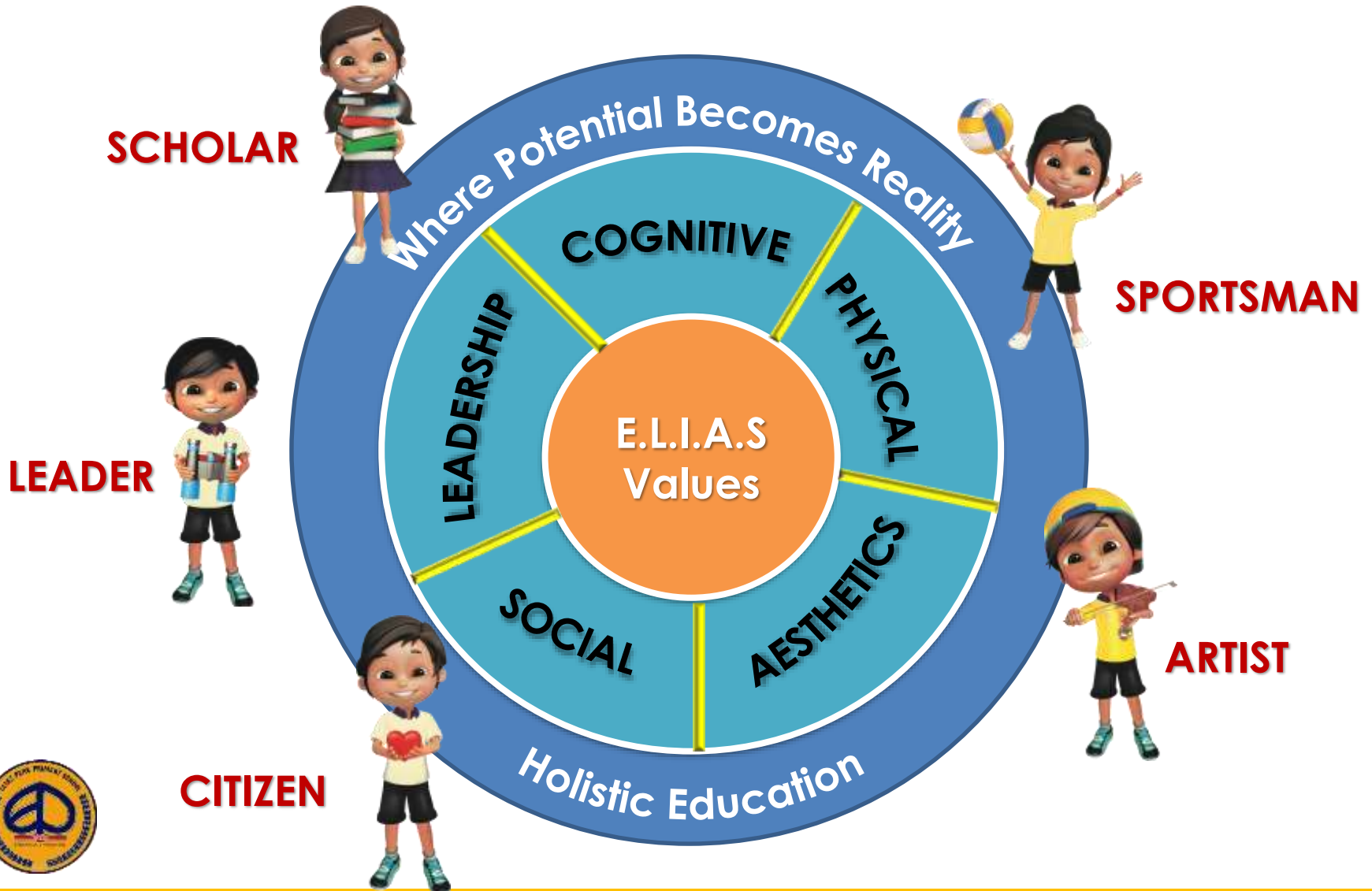
PROGRAMME

SEGMENT 1

- Introduction
- School's Focus and Direction
- Safety & Security Matters
- Holistic Development
- Learning Dispositions
- Calendar of Events



FUTURE-READY CITIZENS



DOMAIN PROGRAMMES

SCHOLAR



Learning
Support
Programme
for English
and
Mathematics

Parent-Child
MTL
Reading
Programme

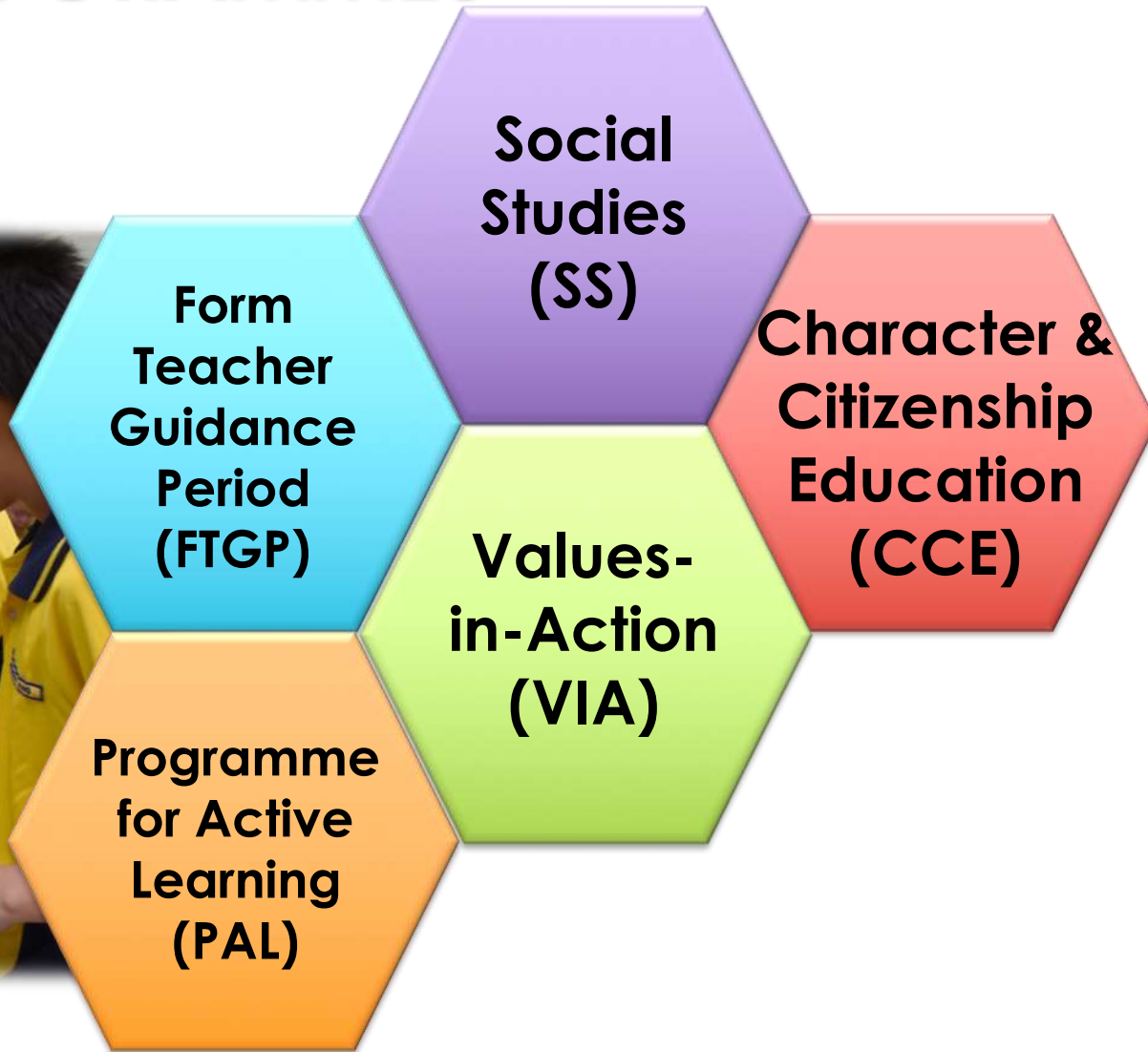
Mother
Tongue
Language
Fortnight

Learning
Journeys



DOMAIN PROGRAMMES

CITIZEN



DOMAIN PROGRAMMES

CITIZEN



Character & Citizenship (CCE) Lessons



DOMAIN PROGRAMMES

CITIZEN

**ACTIVE
DIALOGUE**

**CONTINUOUS
FEEDBACK**

Family Time

in CCE Lessons!



**BONDING
TIME**



DOMAIN PROGRAMMES

CITIZEN



P2 VIA PROGRAMMES

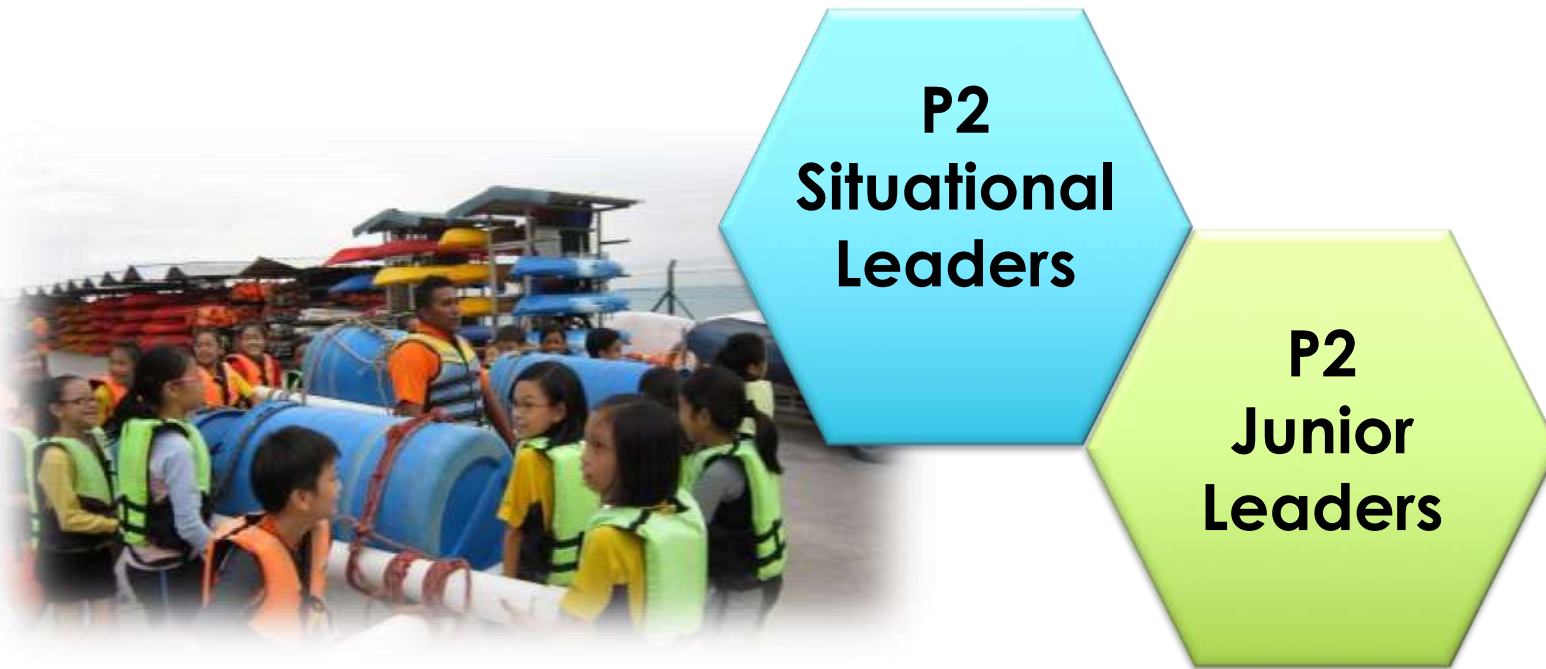
- **Everyday Responsibilities**
- **Donation Drive**
- **Recycling Project**
- **P2 Caring Eliasians @ Home**

To provide authentic platform that enhances students' development as socially responsible citizens through learning and application of Values, Knowledge and Skills.



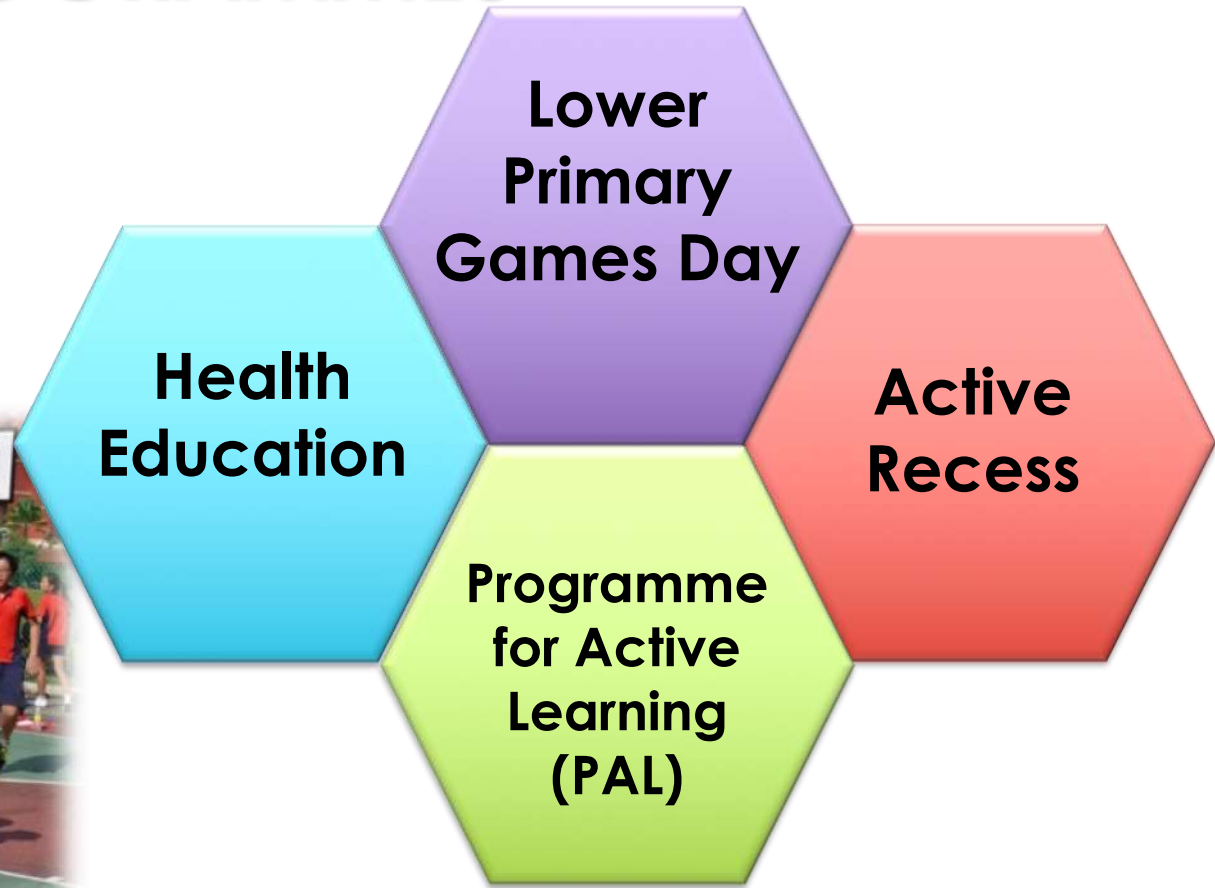
DOMAIN PROGRAMMES

LEADER



DOMAIN PROGRAMMES

SPORTSMAN



DOMAIN PROGRAMMES

ARTIST

Art Museum
Based
Learning

ELIAS
Got
Talent
Showcase

Aesthetics
Week

Ceramics
Module



PROGRAMME

SEGMENT 1

- Introduction
- School's Focus and Direction
- Safety & Security Matters
- Holistic Development
- Learning Dispositions
- Calendar of Events



GRADUAL CHANGES

**From
2019**

**From
2020 or 2021**

School-based Assessment Structures

P1 & P2

- > Removal of all weighted assessments (including P2 year-end exam)

S1

- > Removal of Mid-Year Exam (MYE)

From P3 to S4/5

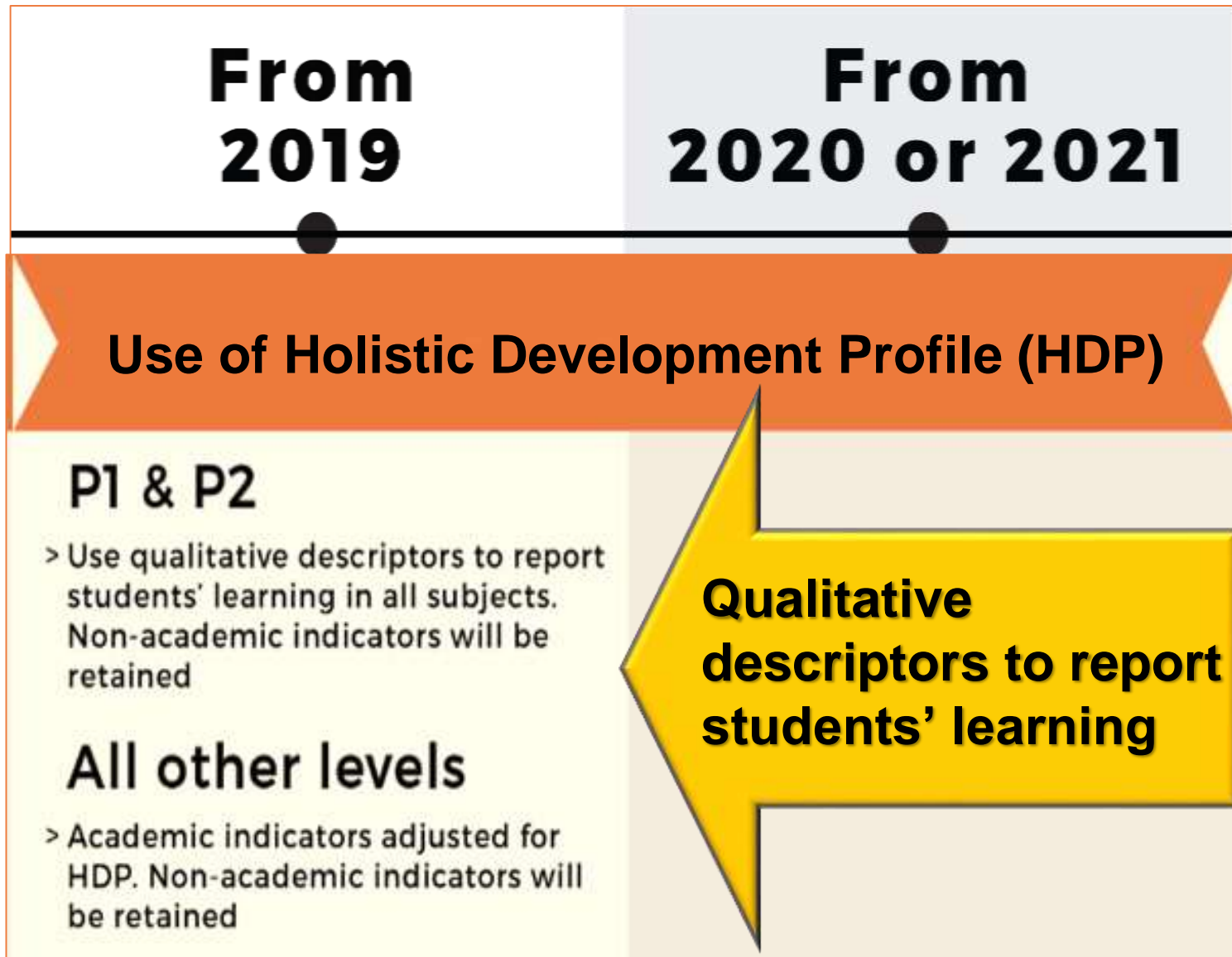
- > Schools to conduct no more than one weighted assessment per subject, per school term. This is in addition to Mid-Year Exam (MYE) and year-end exam at levels where this is applicable

P3, P5, S3

- > Removal of Mid-Year Exam (MYE)



Holistic Development Profile for P2



Holistic Development Profile for P2

Four Levels of Qualitative Descriptors

Accomplished

Competent

Developing

Beginning

**Example: Learning Outcomes for English Language
Speak and express their thoughts and feelings
clearly**



Holistic Development Profile for P2

Learning Outcomes for the subject

Qualitative Descriptors

SUBJECT

MATHEMATICS

• Understand numbers up to thousand.	Accomplished
• Solve mathematical problems involving addition and subtraction.	Competent
• Compare and order objects by length, mass or volume.	Competent
• Understand Fractions.	Developing



How will we allocate classes for Primary 3?

When progressing to P3, students will no longer be assigned classes based solely on academic ability.



2018

From 2019

From 2020

Revising criteria for the Edusave Merit Bursary (EMB) for P1 and P2 and Edusave Good Progress Award (GPA) for P2 and P3

EMB for P1 & P2

- > Singapore Citizen
- > Top 25% of school's level and course in terms of academic performance.
- > Good conduct
- > Monthly household income does not exceed \$6,900 (or per capita income does not exceed \$1,725)

GPA for P2 & P3

- > Singapore Citizen
- > Top 10% of school's level and course in terms of improvement in academic performance
- > Good conduct

EMB for P1 & P2

- > Singapore Citizen
- > EMB will be adjusted to award students who consistently demonstrate good learning dispositions
- > Good conduct will continue to be a criterion
- > Monthly household income does not exceed \$6,900 (or per capita income does not exceed \$1,725)

GPA for P2

- > Singapore Citizen
- > GPA will be awarded to students who do not qualify for EMB, but have shown improvement in learning dispositions within the year
- > Good conduct will continue to be a criterion

GPA for P3

- > Singapore Citizen
- > GPA will be awarded to students who do not qualify for EMB, but have shown improvement in learning dispositions within the year
- > Good conduct will continue to be a criterion





How will my child be selected for Edusave Academic Awards?



- Considers positive learning dispositions (e.g. diligence, curiosity, collaboration and enthusiasm & ELIAS values) instead of academic performance.
- **Edusave Merit Bursary:** P1 and P2 students who display positive learning dispositions consistently.
- **Good Progress Award:** P2 and P3 students who have made significant improvement in learning dispositions.

Learn for Life

Changes aimed at helping our students:


- Have more time and space to deepen their learning, especially in the transition years (lower primary, P3, P5).
- Better enjoy the process of learning and develop dispositions for lifelong learning.
- Preparing our children to excel beyond academic results



Encourage Joy of Learning!

Encourage Joy of Learning by

- not over-emphasising academic performance
- focus on your child's learning journey, rather than comparing with others



I want to go for soccer tryouts

6/10...


Don't focus only on results
Encourage them to pursue their strengths, interests and try new things.



Let's do this!

Goals
✓90/100, A*
Get into XX school

Set goals together
Talk about their strengths, abilities and goals and how they can achieve them.



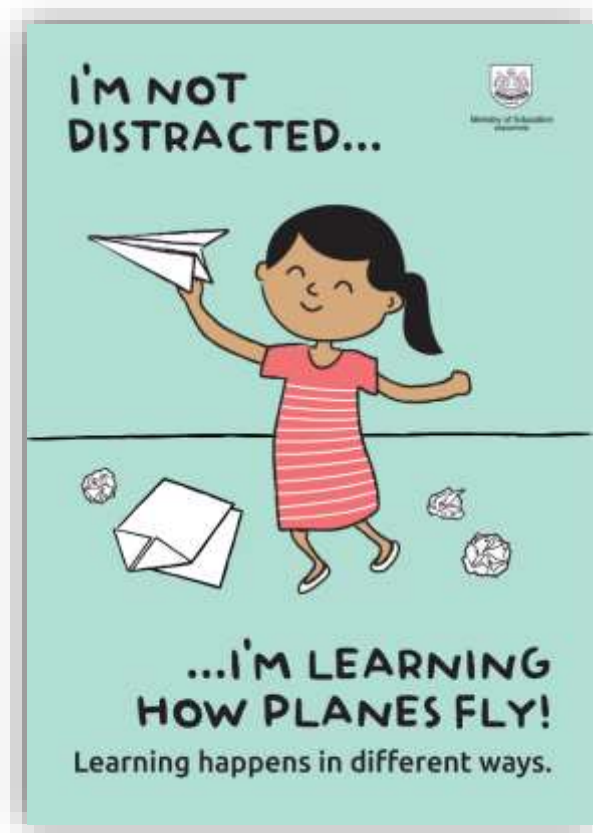
Why can't you be like your brother?

He's top in the class!

Don't compare
celebrate their successes instead of comparing with others.



Give our children the time and space to deepen learning



PROGRAMME

SEGMENT 1

- Introduction
- School's Focus and Direction
- Safety & Security Matters
- Holistic Development
- Learning Dispositions
- Calendar of Events



EPPS PROUD MOMENTS @ HOME

– 7 OCT 2022



2022 PSLE EXAMINATION CALENDAR

Only P6 students report to school on the following dates:

Oral Examination	Thursday, 11 Aug Friday, 12 Aug
Listening Comprehension	Friday, 16 Sep

Students do not report to school on the following dates:

Marking Exercise	Monday, 17 Oct to Thursday, 20 Oct
-------------------------	---



Thank
You

